

Historic, Archive Document

Do not assume content reflects current scientific knowledge, policies, or practices.

62.25

LIBRARY
RECEIVED
★ JUL 18 1946 ★
U S Department of Agriculture



IRIS

SELECTIONS

1946

Topnotch Gardens

ON U.S. HIGHWAY 20

Chesterton

- -

Indiana



A Tribute

WHEN you were a small boy or girl you had a dream, didn't you? About what you would do or be when you grew up. Part was about what you wanted to have: a pretty dress, a new hat, a smiling boy with brown eyes or a girl with ravishing hair . . . After a while or perhaps early your dream concerned itself with a good education, a nice job, a well-kept home, a sporty car, and of course a family.

Well, I was like that too when I was young. Only my dream consisted of fragments . . . something hazy, hard to define . . . I loved and therefore dreamed about the velvety-faced pansies that bloomed each Spring in my Mother's front yard . . . Dreamed and mooned over tulip trees, horse chestnuts, white dogwood and magnolias that grew out in the city park . . . Gazed enraptured and dreamed about the wild white hawk and the pink crabapple that clothed the hills

Continued on inside back cover

By Way of Introduction

Some of you who will receive this catalog know me personally. To hundreds of others I am a familiar "newspaper name" for I served as garden editor to one of Chicago's largest newspapers during the years 1937-1944. The by-line "Deanette M. Small" also has appeared in horticultural magazines, trade papers and on floral publicity for the 1942 National Flower Show when it returned to Chicago for the first time since 1906, the year of its birth.

Since leaving the Chicago paper my time has been largely occupied with expanding Topnotch Gardens from about one-third acre to its present two acres. Which threatens to expand even more this year, if help in the form of a very fine war veteran and iris enthusiast, Mr. Amos Feete, continues. Not on the payroll but happily giving assistance whenever needed are my husband, Waldo P. Houchin and my younger war veteran son, James H. Small.

In addition to iris growing my present duties and pleasures consist of a daily garden column in the Gary (Indiana) Post-Tribune and a weekly in The Chesterton (Indiana) Tribune. The former, entitled "Your Family Garden" is largely a post-war emergency food growing column but with many notes about flowers included. The weekly column, titled "Your Home and Garden" . . . I like to think of as a "better citizenship" column, for that is the purpose for which it is intended . . . the stimulating of better homes and gardens through individual and civic planning.

While most generally you will find me here at home working or thinking about Iris, in March of this year I was fortunately able to attend New York's first post-war International Flower Show—very lovely indeed. From there I traveled to Washington, D. C. for the emergency food growing conference sponsored by the U. S. Department of Agriculture headed by Secretary Clinton C. Anderson. While in Washington I was made one of the members of the committee planning the long-range gardening program for America, which committee, under the sponsorship of the U. S. Department of Agriculture, will meet annually to further the program outlined and approved in March.

Other than this, I am a practical, dyed-in-the-wool farmer of considerable years of experience in fruit and vegetable growing. While I insist I would like to spend the balance of my life "just growing Iris" . . . I have a book underway, an article (on Shasta Daisies) for Flower Grower and perhaps the Indiana Nurserymen's Association to which I belong might put me on their 1947 program . . . if they liked the "Planned Highway Selling" talk I gave them this year. (Purdue University, January 1946).

If you are nearby, come visit me during Iris time. Let me take you on a personal tour to see "my lovelies." Bring your Woman's Club or your Garden Club if you like: a number of clubs have already made arrangements for a full day picnic on the shady lawn of "Waldean", our farm home.



Deanette Small

Sincerely,

Deanette Small.

May 15, 1946.

Foreword

This, my first catalog, was scheduled to go to press earlier and on better paper. It is with regret that I found it impossible to do so. Coupled with other reasons this accounts for my last minute streamlining. Certain data not generally demanded by the "average gardener" but enjoyed by iris fans, has been eliminated.

This deleted material contained, among other things, full data on the hybridizer or introducer, year of introduction, the ratings and awards by the American Iris Society. Such data is planned for inclusion in a bigger, better catalog next year.

As assistance to those not familiar with Iris terminology, a table of definition has been prepared. We have also adopted the procedure of indicating the color or class of each iris immediately after the variety name. In most cases the season of bloom and height of flowering stalk is also shown.

TABLE OF DEFINITIONS

"S"—Standards. The arching or upper petals of an iris flower.

"F"—Falls. The drooping, flaring or falling lower petals.

Season of bloom—In normal weather the tall bearded iris blooming season lasts approximately three weeks. Cool weather prolongs it, hot weather shortens it. "E" indicates a variety blooming early or first in the season, "M" is a midseason, "L" is late or next, and "VL" means very late or one of the last to bloom.

Sheen—The finish or texture of an iris petal.

Substance—Indicates petal thickness. An iris with good substance holds up better in unfavorable weather.

Self—Same solid color in both standards and falls.

Blend—Colors combined or blended in both S and F.

Bi-color—Lighter standards and deeper falls.

Amoena—White to cream standards and colored falls.

Plicata—White or yellow standards with falls of similar color but with deep colored stitching or feather brushing around edges.

Variegata—Yellow toned standards with bright, often lustrous falls in rich red, brown, etc.

Beard—The crest or hairlike line on the falls running from center outward. Generally yellow to orange toned, more recently tangerine.

A. I. S.—American Iris Society. Are you a member? For a \$3.00 membership you will get four magazines filled with helpful, up-to-the-minute material interestingly written, including ratings, judges' comments, etc. Make your check (\$3.00) payable to the American Iris Society, send to me with your iris or daylily order and I will include, complimentary, additional iris or daylilies totaling \$2.50.

Thank you.

1946 Iris Introductions

DEB'S DELIGHT — David Hall

Pink Seedling No. 42-25

In debuting Deb's Delight, here is the story.

I first saw this light pink Iris in Mr. Hall's garden several years ago. Labeled "Pink Seedling No. 42-25" Mr. Hall referred to it as a "first generation pink." He had later, better ones, he said. But I liked this one and finally secured permission to buy it.

Last year when 42-25 came into bloom at Topnotch Gardens I fell in love all over again. When on May 15th this year the first flower opened, I phoned Mr. Hall for permission to name and introduce it. So I offer—

DEB'S DELIGHT—a light pink, almost flesh colored Iris of medium size, blooming early to midseason on 3 ft. stalks. Standards are crinkled and ruffled, almost a "seersucker" effect. Falls more lightly ruffled, cut or notched, like the lacination on a gladiolus petal or a chiffon shasta daisy effect. A bright tangerine beard and a sprinkling of gold over the entire flower add to its airy charm.

The foliage on Deb's Delight is lustrous light green without any trace of browning. The well-branched stalks stand proudly upright through wind and rain. The individual flowers remain in good condition three or more days; turning lighter pink they are even more beautiful on the third or fourth day. They come smilingly through wind and rain without the standards collapsing or falls becoming water-flecked.

Because of its youthful charm as well as fine growing habits, the name "Deb's Delight" has been given. "An Iris . . . so ethereally lovely that our mind travels back to the pink-tinted dreams of girlhood . . . Deb's Delight . . . the light flush that mounts a young girl's cheek when asked on her "first date" or beholds her first "party dress." Deb's Delight—your dream for only

\$5.00

BURGUNDY ROSE

David Hall. 1946

Two years ago we selected Seedling No. 40-27 in Mr. Hall's garden as outstanding in size and color. Blooming last year for the first time at Topnotch Gardens, we marveled again at its size and richness. Nor were we alone in our enthusiasm; every one who saw it praised it highly.

In introducing Burgundy Rose this year, Mr. Hall describes it as follows: "The large ruffled dark amethyst-colored flowers are proudly carried on strong, well branched 35-inch stems. The color of Burgundy Rose is very striking and it has great garden value. It is vigorous and a free bloomer."

Burgundy Rose blooms early for us. (First flower opened May 20 this year.) It comes within the season of Deb's Delight, Fairy Lustre, May Day, Thelma Jean and Samovar. In its color class it has the same characteristics of large form and rich coloring that make Samovar so highly prized. We have only a limited amount of Burgundy Rose for sale, so place your order early.

\$10.00

Alphabetical List of Selected Iris

ADELANTO. Blend. A choice color note in blended gold and brown, this variety is a strong grower and good bloomer with us, with tall stalks blooming in midseason. We like it. **\$1.50**

ALADDIN'S WISH. Blue. Must be seen to be appreciated is this choice, new, blue iris brushed with cream. Mid-season, about 3 ft. tall, and with large flowers. **\$12.00**

ALASTOR. Pink. EM. Originated in England, introduced in America, a nice deep pink with a bright orange beard. **\$2.00**

ALBA SUPERBA. White. This is a new, highly rated, large white iris of excellent substance. **\$20.00**

AMIGO. Bi-color. M, about 38" tall. A darling with light lavender S and violet F. You will like it both for form and color **\$1.00**

ANGELUS. Pink L. Good height, this is a nice late bloomer for you. **.60**

ARCTIC. M White. This makes a handsome clump in the garden in short order. Flowers are large, cream white. Favored by all who see it in bloom. **\$2.00**

ARETHUSA. M Rose. A strong toned rose with a tendency to fade in extremely hot sun. **\$2.00**

AUBANEL. Pink M. From France comes this large-flowered shrimp pink number. It grows well for us. **\$1.00**

AZURE SKIES. Lavender-blue. Not tall but choice is this late blooming introduction of Mrs. Pattison's. Grow it as a clump at the front of the border. Highly rated by the A.I.S. and admired by all. Our stock came direct from Mrs. Pattison prior to introduction, along with a sister seedling called Fleecy Cloud. **\$7.50**

BALMUNG. Yellow plicata, ML. Regal looking, this novelty number has S and F dotted with brown. As it is quite tall, blooms late and has plenty of substance, we do not hesitate to recommend it highly. **\$2.50**

BETTY HANES. Yellow. Not many list this fine tall late yellow; perhaps it does not always grow or bloom well in all sections of the country. It is magnifi-

cent in bloom and has performed well for us. **\$3.00**

BLACK FOREST. Black. Said to be the blackest of iris, with a novel blue beard, this newcomer will likely be madly sought by those who earlier chose Sable. Flowers are medium sized, good form and substance; the height of bloom stalk is slightly less than 3 ft. Stock exceedingly limited. **\$20.00**

BLACK VALOR. Blue-black. ML. A monotone of rich color **\$1.00**

BONSOR. Aniline blue. ML. Of excellent substance, this velvety number always attracts the late season visitor. We think it exceedingly choice. **\$1.50**

BROWN BOY. Copper orange. Large and brilliant, of medium height, a good number in a limited color class. **\$1.25**

BROWN THRASHER. Bronze. The brown thrashers on our lawn are dull beside it. Glows as with a henna tint. Not tall, but makes an impressive clump. **\$9.00**

BUTTERCUP LANE. Yellow. Not only is the color glorious, but the ruffling on this heavy substance 32" iris makes it a standout. Dazzling in a front-of-the-border clump. Midseason bloom. **\$2.00**

CAROLINE BURR. ML Ivory, 40." Large flowers, ivory white, makes this a choice variety in a limited color field. **\$5.00**

CHANTILLY. Orchid pink, M 3ft. This 1945 introduction of Mr. Hall's has the edges of both S and F heavily frilled. Quite different from any other iris we know. Good substance, strong grower, generous bloomer . . . and in great demand. **\$15.00**

CHINA MAID. E Pink. Large flower, sweetly scented, but inclined to dislike unpleasant weather. **\$1.00**

CHRISTABEL. M Red 40". This iris was received with a gasp when introduced in 1936. It is still choice, alive with color and with all the other points a really good iris should have **.75**

CITY OF LINCOLN. ML 40" Variegata. With its gold S and red F, men term this a knock-out. The girls like it also. It is likely one of the best as well as

one of the most popular of variegatas.
\$1.50

COPPER LUSTRE. M 36". The name describes it. Grow it and you will like it. .50

CORONET. Golden tan, ML 34". A muted tone, flushed with rose, Coronet is a good grower and bloomer. .35

CRIMSON TIDE. Red, M, 40". This is one of my favorite reds, a nice dark one. \$2.00

DAYBREAK. Pink blend. A fine flower of good form and substance and a strong grower for us. \$6.00

DINAH SHORE. Orange, EM, 3 ft. Tom Williams, the "Old Dirt Dobber" of national radio fame, scored a hit number with this honey-orange hybrid. We are sure you will want it this year or next, so put it on your check list. \$10.00

DYMIA. Dark purple, E to M, 34". Introduced ten years ago, visitors still comment on Dymia in our border. They should, for it makes a showy clump with its large, almost black flowers with a novel beard of blue. We recommend it highly as a "personality iris." .50

E. B. WILLIAMSON. Red, M, 3 ft. Termed a coppery red blend, but really hard to describe. Good grower. .75

EDWARD LAPHAM. Red. ML. 36". A 1942 introduction of Mr. Lapham's, this iris, termed by many as a "topnotch red" has not proved as sturdy a grower with us as we like. Perhaps we can alter this report next year. \$10.00

ELMOHR. Red violet M 34". This child of the famous violet Wm. Mohr, likely has had enough national publicity to turn its head. Winner of the Dykes Medal in 1945, its praise seems well deserved. Stock in high demand. \$4.00

ELSA SASS. Lemon yellow, ML, 3 ft. Aristocratic and lovely is this introduction of H. Sass! No garden complete without it. Strong grower, free bloomer, a really meritorious iris. I have enough stock to offer at a low price. \$1.00

EROS. Pink. This old-timer tall pink still makes them ask: "What is that?" Blooms early and always. Increases rapidly. We like it in partial shade better than in full sun. .50

ETHELYN KLEITZ. Early light red, about 3 ft. tall, this is an iris hard to picture in words. \$1.50

EXCLUSIVE. Light or pale blue, coming tall and late. Charming form and a good grower. .50

FAIR ELAINE. Yellow bi-color. Unusual describes it — Standards are cream, falls rich gold, with an even deeper beard. Strong grower. \$1.50

FAIRY LUSTRE. Self. A midseason light yellow of excellent substance and fairly tall. \$1.50

FIESTA. Copper. Looks like it sounds—sparkling, a happy arrangement of color. The flowers are large. \$2.00

FLORA ZENOR. Pink EM 3 ft. An iris with good points as well as bad, both so highly publicized they need no repetition here. An iris with so much gossip about it should be interesting, at least . . . From the hand of the late and beloved Jacob Sass. \$3.00

FLORENTINE. White plicata. A tall, midseason bloomer, a large flower with a white base and sprinklings or dottings of lilac mauve. A nice looking iris and one that grows well here. \$1.75

FORTUNE. Brown gold self. A good number in this color class. Flower is large and has good substance. \$2.50

FRANK ADAMS. Bi-color. Fawn-tan standards and rosy tan falls combine to make this a stand-out in color. Grows well and has been a most excellent bloomer for us. .60

GARDEN FLAME. Red. One of the newer reds from H. Sass. A mid to late season bloomer, 34" tall; color is rich garnet red. Highly recommended. \$10.00

GARDEN GLORY. Red. Mrs. Whiting describes her 1943 introduction as "a pure self of rich Bordeaux red." I would call it a real quality red—one of the finest to date. ML 33'. \$10.00

GAY SENORITA. Variegata. A 1944 Salbach introduction as yet not widely distributed in the midwest \$8.50

GLAMOROUS NIGHT. Mulberry. Tall and quite late, with large and well shaped flowers, richly colored. \$1.50

GLEN ELLEN. Golden tan. A tall, strong grower with a color all its own. A most attractive iris, liked by all who see it in bloom. \$2.00

GOLDEN EAGLE. Yellow. From Mr. Hall comes this large, glowing yellow iris. Like all of the Hall introduc-

10

Choice Iris
for

\$2.50

If bought singly would
cost over \$3.65

10

Exquisite Colors
for

\$5.00

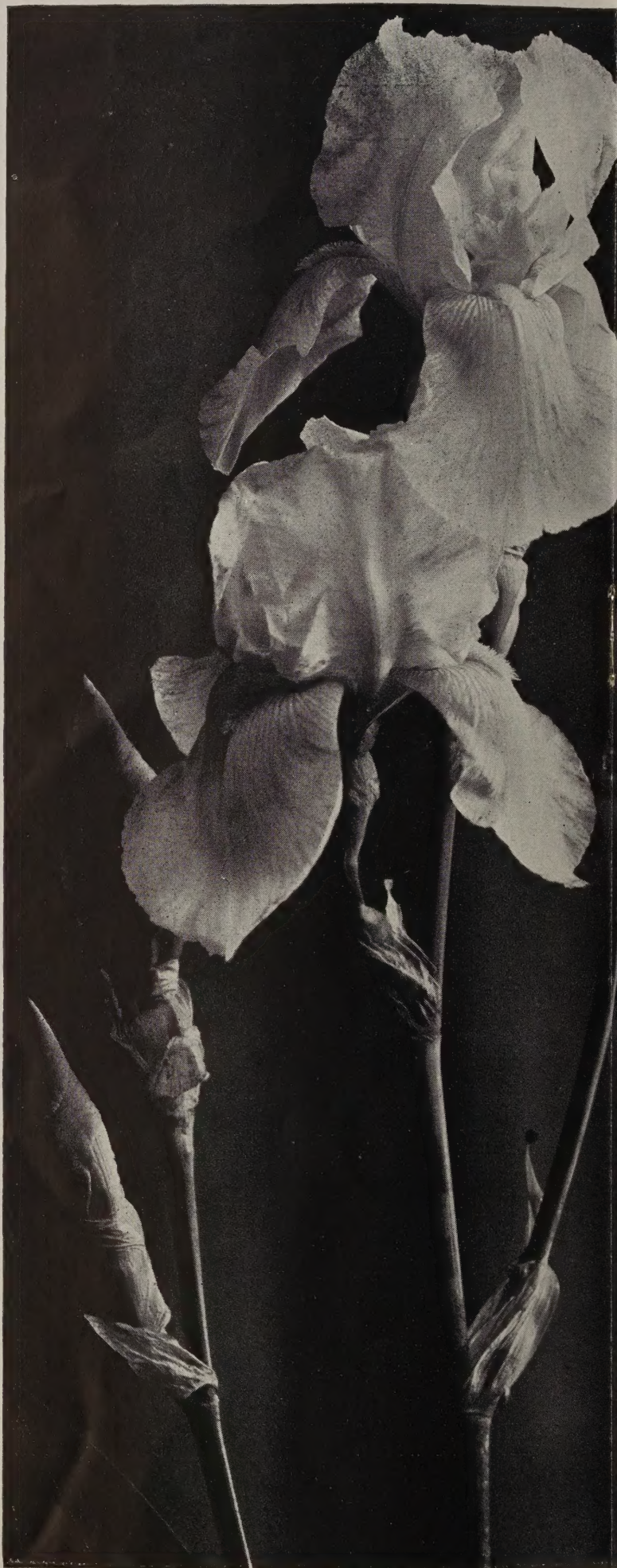
At catalog prices
would cost \$8.85

10

Late Introductions
for

\$10.00

Value in excess
of \$18.20



“Get-Acquainted” Collections

In making up these special collections, great discrimination has been used in selecting varieties. Each is planned not only for a full range of color but a long season of bloom. Every variety selected is a good grower, usually blooming the first year after planting.

Starting Collection

- | | |
|--|---|
| EROS — salmon | BLACK WINGS — blue-black |
| GUDRUN or
SNOW KING — white | WASATCH — plicata |
| BLUE TRIUMPH — light blue | JEAN
CAYEUX — Havana brown |
| GOLDEN HIND — gold | NARANJA — orange |
| ROSY WINGS — blend | ETHEL PECKHAM — red |

You may substitute **KALINGA**, a large cream-colored Iris, **SIERRA BLUE**, late medium blue or **JASMANIA**, a huge yellow, for any of the above. On orders received by July 1 we will include, complimentary, one 50c Iris of different color than any on this list.

DeLuxe Collection

- | | |
|---|---|
| E. B. WILLIAMSON —
mid-season red | RADIANT — brilliant blend |
| GOLDEN GLOW — gold | TIFFANY — yellow plicata |
| MAY DAY — apricot-salmon | WABASH — white amoena |
| THE BISHOP — purple | ELSA SASS — sulphur yellow |
| WHITE GODDESS — white | THE RED DOUGLAS —
tall, late dark red |

RHAPSODY, a brown-purple blend or **ROSELAND**, a choice rosy bi-color, may be substituted for any of the above. In addition we will send, complimentary, one Iris of not less than \$1.00 value on all orders reaching us not later than July 1.

Topnotch Special

- | | |
|--|---|
| BALMUNG or
RUTH POLLOCK —
yellow plicata | CITY OF LINCOLN —
variegata |
| ARCTIC — white | SABLE — black |
| THELMA JEAN — violet | SAMOVAR — copper rose |
| WEST POINT — late blue | STARDOM — pink |
| BUTTERCUP LANE —
Ruffled yellow | THE RED
DOUGLAS — dark red |

This is such an outstanding collection both in color range and price we prefer not to make substitutions. We will, however, on request substitute one variety only from our general list if price is equal and stock is available.

tions in our garden to date, it is a good increaser, the foliage is sturdy, and always winter hardy. A fine iris. **\$3.50**

GOLDEN FLEECE. Light yellow. A tall, ruffled iris, with lemon yellow standards and falls edged with gold. A strong grower here at Topnotch. **\$5.00**

GOLDEN GLOW. Gold. A bright iris, a nice grower. We bought it in 1940 and have a fine stock. 3 ft., Midseason—a real favorite. **.75**

GOLDEN HIND. Yellow. This is one of the earliest to bloom in our garden — and one of the best. The color is rich, bright, and there is lots of it. Golden Hind grows anywhere, increases rapidly, and makes a wondrous cut flower. Not too tall. **.35**

GOLDEN MADONNA. Light Yellow. This is a larger Elsa Sass. Fine form and finish. Midseason. Tall. **\$1.50**

GOLDEN TREASURE. Cream yellow. This 1936 introduction of Mr. Schreiner's has everything to recommend it. Both the standards and falls are alive with color, the latter enhanced by a bright orange beard. A real buy at **.50**

GREAT LAKES. Light blue. Dykes medal winner, a widely acclaimed iris. Tall. Midseason. **\$1.75**

GUDRUN. White. Our best white in the low-priced class. Early, medium height, generous with bloom and a strong grower. **.35**

HARRIET THOREAU. Orchid pink. This 1944 introduction of Mr. Cook's wins much praise everywhere. **\$10.00**

INDIAN HILLS. Purple. One of the richest, showiest iris in our entire collection. **.35**

INNOVATION. Plicata. Large flowers, fine form and substance, hardy, a good grower . . . and rosy trimmed. We like Innovation. **\$8.00**

JASMANIA. Yellow. Like Golden Treasure, here is another of the older iris we rate tops. Color is banana yellow with orange beard. So tall and upright it stands out above other varieties in the garden. **.35**

JEAN CAYEUX. Brown. Some call it coffee colored; it has a color all its own. We rate it highly. **.35**

JUNALUSKA. Blend of red-copper. Old but outstanding. **.35**

KALINGA. Cream. Another fine, large old-timer. **.35**

KATHERINE FAY. White. A 1945 introduction of Mr. Fay's of Wilmette, we saw this fine iris in Mr. Hall's garden in 1944. Since that time it has received high praise throughout the country. It has grown well for us. **\$12.00**

LADY MOHR. Oyster white. This is a true novelty number, with oyster white standards and greenish yellow falls with a touch of red-violet on the beard. 3 ft. Blooms early. A West Coast introduction, a favorite out there, now in demand in the Midwest. **\$25.00**

LADY NAOMI. Plicata. Blue speckles against a white background make this novel and lovely. **\$3.50**

LAKE HURON. Medium blue. A nice performer. **\$1.50**

LAMPLIGHT. Buff blend. Introduced by Mr. Schreiner in 1944. M. 3 ft. tall. More details next year. **\$10.00**

LA LORRAINE. Copper pink. EM. 33 in. Front of the border number in a nice interesting color. **\$1.00**

LANCASTER. Old rose. A heavy sub-stanced flower about 3 ft. tall, blooming in midseason. A nice iris with us. **\$3.50**

LATE SUN. Deep yellow. M. 24 in. A deep yellow enriched with red and gold. Large flowers on sturdy stalks. **\$1.50**

LORD DONGAN. Bi-color. One of the most outstanding iris in our collection. Standards are Chinese violet with falls of Corinthian purple. A tall, mid-season bloomer. **\$7.00**

MAIDEN BLUSH. Apricot. A self, with domed standards and semi-flaring falls, good substance, and another good grower from Mr. Hall. **\$5.00**

MATTERHORN. White. A classic flower, wondrous to behold. **\$1.50**

MATULA. Blend of rose tan, with large ruffled flowers. A striking iris and well liked by all visitors at our garden. **\$1.00**

MAY DAY. Apricot-copper. The color is stunning, the plant grows well, has a lot of bloom. Only fault is that it dislikes too much wind or strong sun. In a protected spot it makes an outstanding clump. **.75**

MELITZA. Salmon-flesh. An iris every one admires. Standards and falls are ivory pink. A novel tangerine beard radiates from the falls. **\$2.00**

- MING YELLOW. Yellow self.** This iris has few peers in its color class. Truly an aristocrat. ML. 36 in. **\$1.50**
- MISS CALIFORNIA. Pink.** Tall, mid-season, and very fine. **.60**
- MISSOURI. Medium blue.** Dykes medal winner. Has perfect form in the flower and more substance than most. We wouldn't be without it. **.50**
- MME. LOUISE AUREAU. Plicata.** An early, front of the border, novelty number with rosy tinting on a white background. **.50**
- MOONLIGHT MADONNA. Lemon yellow. M. 36".** An iris of fine color, excellent substance, and a sturdy grower. One of the best in this color class. **\$7.50**
- MOONLIT SEA. Novelty blue. M. 36 in.** Termed an indigo blue, marked with white and gold pencilings, this iris is still too new with us for other comment. **\$5.00**
- MOROCCO ROSE. Rose pink.** Like Garden Magic, this iris does not do its best the first year, but the color is well worth waiting for. It has grown better for us on richer soil, well limed, and is blooming on one-year divisions for the first time. **\$1.50**
- MOUNT HERMON. White.** A 1945 introduction, with a high rating. Further comments another year. **\$15.00**
- MRS. J. L. GIBSON. Blue-purple self.** Old, but fine color. Blooms late for us and is always admired. **.50**
- MULBERRY ROSE. Deep pink.** A self with blooms of large size on tall, strong stems. Very choice. **\$6.00**
- NARANJA. Orange.** Nothing else quite like it. Despite its decade of service, we still rate it highly. **.35**
- NIGHTFALL. Purple.** Almost black, taller and better, to our mind, than Sable. From Mr. Hall. **\$3.50**
- NIGHTINGALE. Russet.** Another Hall number, a glistening golden russet, with large flowers on 36 in. stems. Stands out in the garden. **\$5.00**
- ORCHID LADY. Orchid self.** An unusual color, a strong grower with us. More comment next year when we see it this year in a large clump. **\$5.00**
- ORMOHR. Lavender.** Taller than the famous short-stemmed, huge-flowered Wm. Mohr, this is a novelty number that grows and blooms well in our garden. **\$1.00**
- OZONE. Self.** Hard to describe, this novelty must be grown to be appreciated. A rosy-lavender with a sprinkling of brown. L. 36". **.50**
- PESHAWAR. Brown-purple.** This newcomer to my garden came originally from Carl Fischer, well-known gladiolus hybridizer. Bloom follows the dwarf iris. Grows about 16" tall, with amazing large flowers and a rich mastery of color. We use it in flower arrangement with Faust or Dream tulips, Snow King iris and Glacier (white) tulips, with a foliage accent of purple-leaved plum. **.50**
- PERSIAN PRINCE. Variegata.** Yellow standards, rich brown falls, exceedingly showy. Strong grower. **\$2.50**
- PHOEBE. Pale yellow.** A large flower, with good substance and excellent growing habits. Color is unusual, having a touch of green gold. Grows tall; blooms late. Choice. **\$3.00**
- PINK REFLECTION. A new pink** from Mr. Cook. Rated high by many. Our comments next year. **\$8.00**
- PLATINUM BEAUTY. Lilac pink blend.** Another good iris that Carl Fischer insisted we should try. Blooms tall and late. Very lovely. **\$1.00**
- PRAIRIE SUNSET. Blend.** A famous flower and winner of the Dykes medal. Glows with sunset color and grows and blooms beautifully for us. **\$3.50**
- PRISCILLA. White.** A really beautiful thing. But it grows and established itself slowly for us. We forget all that when it comes into bloom. This and Snow Flurry and the newer Katherine Fay are our top favorites in white. **\$2.00**
- RADIANT. Blend.** Likely the most radiant iris in our collection: definitely the most "alive." A strong grower, free bloomer, an iris that stands up under wind and sun. Bronze to brick tones. Nice height. **\$1.00**
- RED AMBER. Rose-red.** One of the best in our collection. **\$5.00**
- RED GLEAM. Red.** Rich and velvety. Midseason. Nice. **\$1.50**
- RED VALOR. Garnet.** Another rich colored thing. **\$5.00**

RHAPSODY. Blend of brown and purple, most unusual. Grows and blooms well. **\$1.00**

ROSELAND. Rose bi-color. Rosy standards with deeper rose-red falls. Blooms late and color is most attractive. **\$1.00**

ROYAL COACH. Yellow plicata. Early to mid-season, medium height, this yellow-flowered plicata has dottings of brown. Flowers are tailored, wonderful substance and always a great deal of bloom. Hardy and a generous multiplier. **.50**

ROYAL SCOT. Plicata. A "loud" iris as the name suggests. Grows and blooms well here. Since this is our favorite iris class, the plicatas, we naturally rate this tops. **\$7.50**

RUTH POLLOCK. Plicata. Another of our favorites. Blooms later than Royal Coach, just prior to Balmung and Siegfried. This rosy-splashed yellow plicata is most choice. **\$2.50**

SABLE. Black. Black purple or black violet, one of the darkest. It seldom gets over 32"-34" tall for us. Color makes visitors gasp. **\$2.00**

SAMOVAR. Blend of coppery rose. Choice color, most attractive. Grown in partial shade, protected from strong sun and wind, you will find yourself standing in admiration beside the clump . . . along with your guests. **\$2.00**

SHINING WATERS. Light blue. This tall, shining iris grows and blooms beautifully for us. **.50**

SIERRA BLUE. Medium blue. Another tall one, a midseason bloomer, a strong grower and a free bloomer. Put it at the back of the border, or in front of shrubs as stalk is so tall it is sometimes forced over by wind. **.50**

SMOLDER. Purple self. A tall, late, good one. **\$1.00**

SNOW CARNIVAL. White. A new ruffled number, highly recommended. Our comments next year. **\$8.00**

SNOW FLURRY. White. Ruffled blue-white, the most interesting in bud and dramatic as an open flower. We can't praise it too highly. Has grown and bloomed wonderful well for us. Visitors love it . . . **\$4.00**

SNOW KING. White. This and Gudrun are two older good whites, either or

both nice for a beginning collection. Both bloom early. **.35**

SONG OF GOLD. Yellow. Of medium height, blooming mid-early in the season, with flowers sweetly scented, this is one of our favorites. Flowers are nice sized, growth and increase good. **\$1.00**

SONNY BOY. Copper blend. High-lighted with color. Early, front-of-the border number. **\$1.25**

SONRISA. Pink. Large flaring flowers, coppery pink, underlaid with yellow. wondrous grower and free bloomer. Midseason. 37" **\$10.00**

SPRING CHIMES. Russet. Golden russet self, lighter than Nightingale, another of Mr. Hall's meritorious introductions. **\$3.00**

SPUN GOLD. Yellow. Seen as a seedling in Quality Gardens in the late 30's, we thought this classic, as it has proven to be. Seemingly never enough stock to go around. Dykes medal winner, widely acclaimed. **\$6.00**

STAINED GLASS. Blend. Coppery red, a color stand-out. **\$1.00**

STARDOM. Pink. Mr. Hall states that "according to Ridgeway's color chart, the nearest color tone is onion skin pink, although it does not have a strong pink tone." Grows and blooms beautifully for us. **\$2.00**

SULTAN'S ROBE. Blend. A 1945 introduction of California's Mr. Salbach. Richly shaded in copper to red tones. New with us, so our comments will have to be withheld until we see how it behaves here. **\$12.50**

SUNDANCE. Blend. One of Mrs. Nesmith's achievements, a fine blend of tan and mahogany. Tall. **\$1.50**

SUNSHINE. Yellow—or should we say bright golden yellow, for this is the most lively of iris, perfectly magnificent as a clump near the front of the border or mid-way. Grows rapidly, blooms generously. Highly recommended. **\$5.00**

TAPESTRY ROSE. Old rose. Large flowers on 38-inch well branched stout stems, free blooming, good form and substance. Another fine Hall introduction. **\$3.50**

TEA ROSE. Pink. The story of the performance of Tea Rose in our garden is

hard to believe. A single rhizome last year—a clump this year with not one but three heavily laden blooming stalks rising from it and about ready to bloom at this writing! (May 13). We have never seen anything with more prodigious growth, any better or more heavily budded stalk! Although Mrs. Whiting, hybridizer and introducer, terms Tea Tea Rose a mid-season bloomer, 36 in. tall, it will bloom earlier and taller for us. Color is glowing copper pink, strong and warm. A.I.S. 1944 rating of 90. Awarded Honorable Mention in 1945.

\$10.00

THE ADMIRAL. Blue. Of his introduction, Mr. Hall writes: "An especially fine blue Iris. I believe it comes as near to the standards of perfection as any Iris in our garden. The color is an intense blue, slightly deeper than medium blue. Form, finish and substance are outstanding. No Iris in the garden will take more punishment from burning sun and driving rain than The Admiral . . . The 37 inch well branched stems never go down. Vigorous, free blooming and a rapid increaser." **\$3.00**

THE BISHOP. Purple. A favorite in our garden, this one. Flowers are large, good form and substance. The color is brilliant and commanding. One of the best buys in my entire list at . . . **.75**

THE RED DOUGLAS. Red. This tall dark red is a handsome, dependable number. Grows well wherever put, blooms regularly and increases nicely . . . Striking as a single stalk, when established as a two or three year clump there are few Irises that can match it in rich brilliance. It has won every award of the A.I.S., including the coveted Dykes Medal (1941). Permanent Rating 93. A wondrous buy at **\$1.25**

THE SENTINEL. Copper. Flowers are medium large, a glowing burnished copper color. Form and substance good. Increases nicely, making a handsome second-year clump. **\$3.00**

THELMA JEAN. Violet. E-M. Here is a most attractively colored iris with excellent branching and fine form in the individual flower. One of the earliest to bloom for us; about 3 ft. tall. High percentage of bloom on first year divisions, with often two flowering stalks. **\$1.50**

TIFFANY. Yellow plicata. Intense rose or deep pink stitching on the falls at a distance deceive you into thinking the

color solid. The effect is most enchanting. Every one likes and therefore orders this when they see it in the garden. One of the best buys in better, older Iris. **.60**

TITIAN LADY. White. Lovely lady, this one with the give-away name. For Titian Lady has a bright tangerine beard that makes her stand out in a crowd like any other redhead. Domed standards, semi-flaring falls and with us good habits of growth are other fine points. You guessed it: Titian Lady is one of our personal favorites, liked by both the male and female members of our immediate family. **\$2.00**

TOBACCO ROAD. Brown. Like Brown Thrasher, here is another of those choice rare brown numbers. This one is golden tobacco brown. M. 34". **\$8.00**

TREASURE ISLAND. Yellow. This tremendously large flowered brilliantly yellow iris dominates everything in the garden when a clump of it comes into color. For years it has been one of our chosen. **.50**

VAGABOND PRINCE. Purple. Glossy, almost black, a truly shining iris. For the border front. Blooms midseason. **.75**

VIOLET CROWN. Violet. In Mrs. Pattison's Quality Gardens 1937 catalog. Violet Crown is described as . . . "A stunning iris of unusual and most attractive shimmering pale violet shades. A self, but with falls slightly deeper than the standards. Form is perfect; the flower lasts a long time. One of the finest irises we have ever grown." **.75**

WABASH. Amoena. Tall and novel describes it—Brisk white standards, lightly ruffled, with flaring falls of deep hyacinth violet penciled with white. Flowers of good form, medium size. A Dykes Medal (1940) winner, Wabash is always in good demand for there is nothing quite like its novel arrangement of color. **\$1.00**

WASATCH. Plicata. Did you wonder about the big Iris on our cover? Well, it is Wasatch — likely the largest flowered Iris in all our 700 varieties. Color is white, marked with blue. One of the earliest to bloom, slightly under 3 ft. tall. We recommend it highly for form, color, size, free blooming and tremendous increase. **.50**

WEST POINT. Blue. An aristocratic late blooming indigo blue iris with over-

tone of brown on falls. Highly recommended. **\$1.50**

WHITE ALONE. White. A fine, early-blooming white iris of good height and branching. A 1937 introduction of Mrs. Norman Horton's. **\$1.00**

WHITE CITY. White. Large and lustrous, White City is an English iris, a Dykes Medal winner there. Last year the A.I.S. gave White City the only Award of Merit granted a foreign variety. **\$4.00**

WHITE GODDESS. White. Here is one of the top numbers in older whites Beautifully domed standards, slightly ruffled falls, a nice large flower on well-formed stalks. Increases and blooms well for us. **\$1.00**

WHITE WEDGEWOOD. White. A large flowered new number whose performance is good to date but further comment will have to be withheld until next year. **\$12.50**

WM. A. SETCHELL. Violet bi-color. A tremendously large flowered Iris, violet purple in color, with much bloom. **\$1.25**

WINTER CARNIVAL. White. Mr. Schreiner's 1941 introduction and one of fine form and substance. **\$3.50**

YELLOW JEWEL. Yellow. A mid-season bloomer, this has become one of our favored yellows within the short time we have grown it. A 1939 Smith introduction with an A.I.S. permanent rating of 90, it has won both Honorable Mention and Award of Merit from this society. Strong grower here. **\$3.00**

In addition to the above listings, we have quite a large number of recent and meritorious introduction, but in too small quantity to warrant being placed on the printed list.

We also have hundreds of older varieties, still in good demand, but because of time and paper scarcity we decided to eliminate from our general list. A brief descriptive list will be issued after blooming season. Write us at once, if you wish a copy mailed. Most of the iris on this list will be priced between 35c to \$1.00 each.

Although it may have a "personal" flavor, I will be glad to suggest a good color collection from either this catalog or the later list to come. Your inquiries will be promptly answered.

ON PLACING YOUR ORDER

We do not have a large acreage of Iris. Actually our collection, numbering over 700 varieties, consists of not more than 20,000 plants to be distributed between some 3,000 customers living in every part of America. So need we say order early if you want your order completely filled.

Terms are cash with order except to those with established credit. Postage will be prepaid on all orders amounting to \$2.50 or more. Add 35c extra to your money order if your order runs less.

All orders will be filled in rotation. Shipping will begin July 1st and continue until all orders are filled or we run out of stock. Please specify a definite shipping date if you plan to be gone all summer or during a vacation period. We can fill orders beginning June 15 with the understanding that the early-shipped rhizomes will be smaller but if set out at once will make vigorous growth in your garden and bloom equally as well next year. Or planting can be delayed until early September when large, fully developed rhizomes will be shipped.

Our stock is guaranteed to be well-grown, true to name, hardy and vigorous, with quality equal to any grown anywhere. Actual records reveal a high percentage of bloom the first year after planting; this we consider fully as important as size of the rhizome, the latter often being over-stressed.

We are also growing many fine Hemerocallis, Peonies and Oriental Poppies that came from Quality Gardens when Mrs. Pattison retired and moved to California. A limited quantity of these will be offered for sale on an early fall list, a copy of which will be mailed on request.

In closing, thank you for the time spent in reading this catalog. We hope it will prove one of the best investments you ever made; the beginning of a renewed garden interest or the furthering of one already established. May we also hope it will be the beginning of a friendship with us and that some day you, too, like hundreds of others, will greet us, like an old friend, on the threshold of Topnotch Gardens, to which you are cordially invited any time you happen to be passing this way.

Continued from inside front cover

along the Bottom Road . . . Picked and dreamed about the tight-fisted clusters of deep blue and rich purple long-stemmed violets gathered along the Mississippi River and carried home lovingly to my Mother.

Breathed deeply and dreamed about the old-fashioned lilacs and Harrison's Yellow Rose that seemed a part of every farmstead. Sighed over pink Dorothy Perkins rambler roses and later Dr. Van Fleet, for they made you think of June brides and weddings. Knelt as at a cathedral altar beside the fragrant clumps of "white flags" that spangled the edge of a willowed lake on which white swans rode . . . Of such fragments were the dreams of my childhood made.

By the time I was a young lady finishing business training I knew that my dream was for a garden. Not just an ordinary, every-day garden, but one large and choice enough to hold all the flowering trees, shrubs and plants whose names and habits I had been memorizing from the time I learned to walk.

When you know what you really want it is easier to make a dream come true. That is until a depression comes along and luxury dreams stop. But if the dream is a sound one, a deep-dyed real one, after the depression ends the dream again starts up, stronger for the respite . . . In 1935 when my dream began again I knew it was largely for a single flower that by now had come to dominate my garden: a plant that seemed to weather every vicissitude and still come through with color flying each Spring—the tall bearded Iris.

Now every dream must have a good fairy: often you will not know her until the need arises. I had a good fairy, oh, a very real flesh-and-blood one—the very best kind there is! My good fairy knew all about Iris: when I asked her, she told me about their ancestors and habits, who bred them and who grew them, how they should be grown and how they should be shipped . . . Finally when I needed or wanted new Iris—varieties I didn't see how I could possibly afford—my good fairy managed to see that they got into my garden . . . "for she thought I would appreciate and take care of them . . ." And I did.

The name of my good fairy, as some of you know, is Mrs. Douglas Pattison, owner of the famous Quality Gardens, now retired and living in California . . . Through her guidance and more often kindness, Topnotch Gardens came into being: there are thousands of Quality iris now at Topnotch, catalogued in this book.

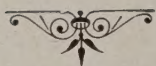
It has been nice to have had both a dream and a good fairy. To all who read this I hope Life has been equally as good.

In the final analysis through the now permanent establishment of Topnotch Gardens I hope to be a worthy successor to the dear friend, understanding woman and eminent irisarian to whom this tribute is paid.

Sincerely,

Chesterton, Indiana
May 1, 1946

DEANETTE SMALL



Growers of Quality Perennials

TOPNOTCH GARDENS, known nationally for fine Iris, are also headquarters for other choice perennials, including Hemerocallis, Oriental Poppies, Peonies, Shasta and Painted Daisies, Phlox, Chrysanthemum, Delphinium, Columbine, Violas and Bleeding Heart.

While many of these plants are sold locally or to highway customers, we also ship to all parts of the country. Customer satisfaction is assured as whatever plant we list has proved itself reliably hardy as well as having good blooming habits or "garden value."

Our gardens are in bloom from early April until frost. Visitors are welcome any time to view the field plantings, trial grounds or display beds.

We will be glad to add your name to our mailing list to receive our general catalog.

Topnotch Gardens

P. O. BOX 576

CHESTERTON

INDIANA

ON U. S. HIGHWAY 20